

The West Indian Fruit Fly

Life Stages

Fly



Egg



Larva



Spoilt Fruit



The West Indian Fruit Fly is a small colorful fly. It is about the size of an adult common housefly. It is difficult to see!

The fly lays its eggs beneath the skin of mature fruit. You may see small dark scars on the surface of the fruit. The spots may be sunken also.

The eggs develop into larvae or worms. These worms are creamy white in colour. They resemble the worms or maggots of the housefly. The worms are easy to see. Look for them!

The worms feed on the pulp of the fruit. The pulp becomes infected and rotten!

You would not want to eat these fruits. They can't be sold. They can't be exported.

Act now to prevent the spread of this fly!



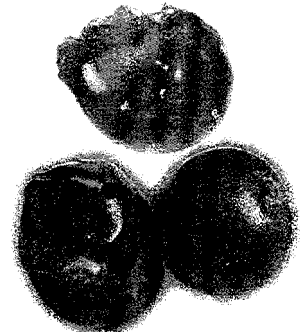
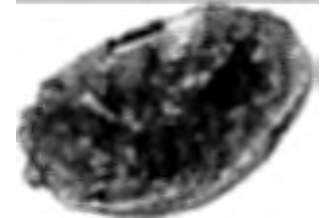
Anastrepha obliqua



Fruit Fly on Guava



Larva



Larvae on Fruit

Here's what you can do...

Take a close up look at the mature fruits on your tree for small dark scars or sunken spots.

Do this regularly.

Open a few mature fruits and look closely for the creamy white worms crawling around. Young ones are small and not easy to see. Larger worms are clearly visible.

Pick all mature infested fruits before they ripen.

Collect fallen fruits.

Place all in a black plastic bag, tie tightly and put in the sun for at least 48 hours.

This will kill the larvae!

Do not give away these fruits to friends or neighbours close by or any other part of the country!

Do not sell them either!

Allow the Ministry of Agriculture persons to visit and set traps on your premises.

Tell your children to be on the look out for worms in fruits and to tell you immediately.

Call the Ministry of Agriculture immediately if you see worms in your fruits and inform them.

Successful management of the fruit fly is a job for all of us.

Do your part!

Fruits Affected

Guava

Red Plum

Yellow Plum

Hog Plum

Mango

Carambola

Rose Apple

West Indian

Cherry

Sapodilla

Pomegranate

Cashew

Golden Apple

Governor

Plum

Coco Plum

Passion Fruit

and many

others.



Ph:

