


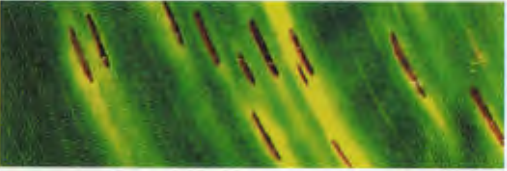
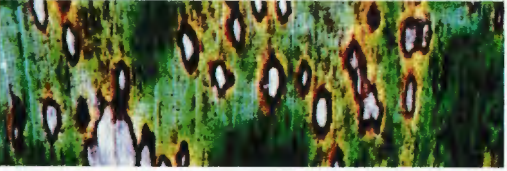




MINISTRY OF AGRICULTURE AND FORESTRY

# DIAGNOSING YELLOW SIGATOKA DISEASE IN THE FIELD

<b>STAGE 1</b>	
<b>STAGE 2</b>	
<b>STAGE 3</b>	
<b>STAGE 4</b>	
<b>STAGE 5</b>	

Prepared by: Plant Protection and Quarantine Services Division of Agriculture.  
Email: [agriquarantine@gmail.com](mailto:agriquarantine@gmail.com) Tel: 266-3812 / 3820 Sponsored by: Food and Agriculture Organization



MINISTRY OF AGRICULTURE AND FORESTRY

# DIAGNOSING BLACK SIGATOKA DISEASE IN THE FIELD

**STAGE 1**



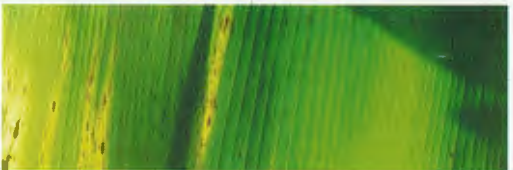
**STAGE 2**



**STAGE 3**



**STAGE 4**



**STAGE 5**



**STAGE 6**

